

Why does Amberlea Presbyterian Church exist?

Our mission was given to us by the Lord Jesus in the Great Commission, Matthew 28.18-20: *“I have been given all authority in heaven and on earth. Therefore, go and make disciples of all the nations, baptizing them in the name of the Father and the Son and the Holy Spirit. Teach these new disciples to obey all the commands I have given you. And be sure of this: I am with you always, even to the end of the age.”*

Our vision expresses how we believe God wants us to live out our mission as a local expression of Christ’s church:

Amberlea Presbyterian Church cares for you, whoever you are, and exists to grow a community following Jesus.

What is a “Presbyterian” Church?

The term “Presbyterian” refers to how Amberlea is organized to focus on the authority of the Bible and on being Christ-centred.

The word Presbyterian means elder. Elders are church members elected for Christian service by their congregations to represent them and to serve God and the church.

The birth of Presbyterianism took place in the 16th century. John Calvin, known as the father of Presbyterianism, was a leading figure in the Protestant Reformation. Worship, education and the role of laypeople were a large part of his teachings. Calvin’s teachings spread throughout Europe and also in Scotland, where John Knox later established Presbyterianism in 1545. Today there are nearly 1,000 Presbyterian congregations across Canada.

When are Amberlea Worship Services?

11:00 AM Sunday Morning Worship
KidZone during morning service

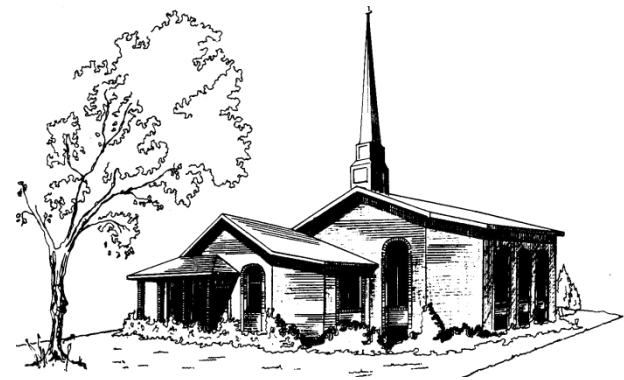
Who can I contact for more information?

Church Office (905) 839-1383
Church Email info@amberleachurch.ca

Visitors Guide

Amberlea Presbyterian Church

Sundays 11:00 AM



“Amberlea Presbyterian Church cares for you, and exists to grow a community following Jesus”

Phone: 905-839-1383
Email: info@amberleachurch.ca
Web site: www.amberleachurch.ca
1820 Whites Rd, Pickering, ON
L1V 1R8

During Service

Worship Service

During service we will sing, conduct “children’s time”, hear a message (includes Bible reading), and pray. The projector will show each step, on the screen.

Kidz Programs (Sunday)

The Nursery opens 15 minutes before service for children new born to age 3. The KidZone program for grades JK to 6 follows the opening announcements in service.

Offering

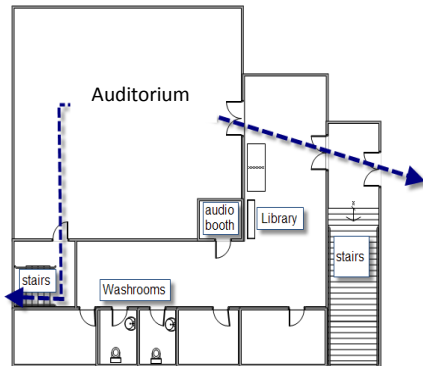
Regular attendees support Amberlea’s ministry. This service is the congregation’s gift to our visitors; we do not expect visitors to contribute to the offering.

Community Time

After service, join us in the lower hall for coffee, tea and fruit juice.

What’s Where?

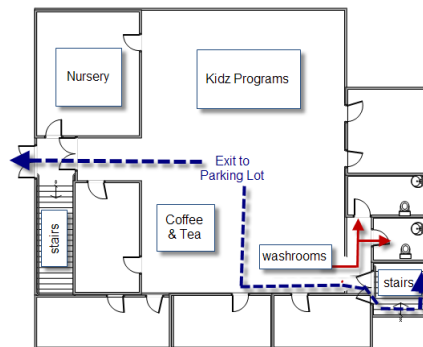
Here is a rough map of Amberlea Presbyterian Church



Upper Level

Upper Level:

- The stairs at the back lead to the lower level exit to the parking lot
- Washrooms are off the side hall
- The audio booth is around the corner from the library
- The library is in the entrance way



Lower Level

Lower Level:

- Washrooms next to the front stairs
- Nursery is next to the exit to the parking lot; enter from the main hall
- Front stairs lead to the front door exit

Mission Opportunities

Food Bank Contribution & Communion

Amberlea hosts communion the first Sunday of every month.

The congregation is invited to bring a non-perishable food item to contribute to the Salvation Army food bank to each communion.

Opportunities to Help

Opportunities range from helping adults & children who attend service, to joining one of our four mission teams: Durham, GTA, North America, the World. See our website for details.

Resources

Lending Library

Located in the front entrance, Amberlea has added over 100 new titles, so far, since 2008. Books are categorized by fiction, biography, devotional, prayer, spiritual growth, & family

Caregivers

The Caregiver ministry supports members of the congregation who need help (for example, people who are ill or bereaved, care for ill family members, have a new baby, or celebrate a major milestone.) The caregivers provide home visits, errands, baking.

Prayer Chain

Amberlea has a chain of members who pray, privately, in their own homes, for the needs & blessings of others.

If you would like Amberlea to pray for a need or a blessing, contact Catherine Smith (905-831-8991)

Audio & Video Recordings

The audio booth volunteers make a DVD recording of most services available shortly after the service. You can download an audio recording of the message a few days after the service or subscribe to our audio podcast. (<http://www.amberleachurch.ca>)